

InfiniStream Network Management

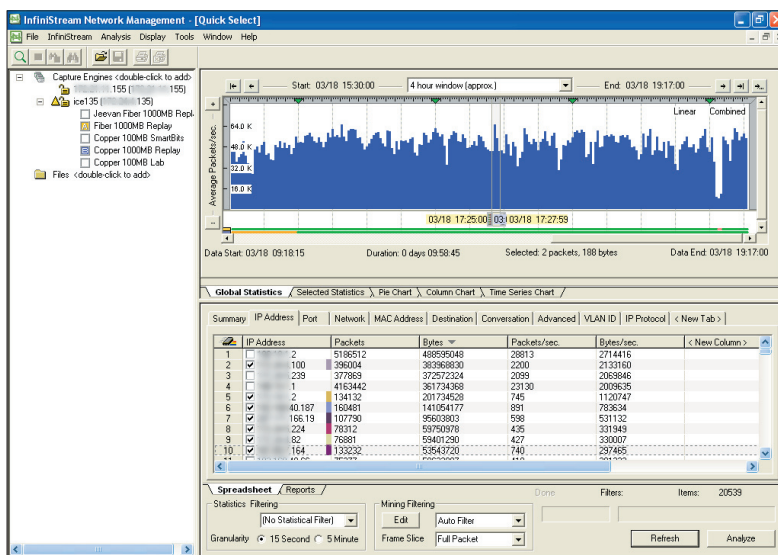
Real Time and “Back in Time” Performance Analysis

Product Overview

Network performance problems don't always occur when you're watching the network. Quite often, problems are random, intermittent, nagging, unpredictable, and quite serious. These types of problems have been the most difficult for IT professionals to pinpoint and resolve because they require a look back in time to determine exactly what happened and when. Fortunately, InfiniStream™ Network Management offers a solution with a network performance analysis product that makes it easy to look back in time at a very granular level. With InfiniStream software, you can examine network performance, look at traffic trends, isolate anomalies, perform deep packet analysis, and generate summary reports – all from one powerful and intelligent solution.

How is this possible? InfiniStream Network Management overcomes typical limitations of time-based capture devices by providing continuous stream-to-disk data capture at full line rate on 10/100 and Gigabit Ethernet links. Data from all seven layers of the OSI model is automatically recorded on up to 4TB of storage buffer, making it easy for IT professionals to look back over a period of several days or weeks and quickly resolve the intermittent problems that can impact network and business performance. InfiniStream appliances can be used in a variety of situations from half-duplex SPAN port and full-duplex connections to aggregating up to four streams of data to support complex asymmetric routing environments.

InfiniStream software can point out key metrics for protocols that are in use, including Multicast protocols such as PIM and IGMP. It also analyzes the widest breadth of active network and application protocols in the industry, such as Voice over IP, Citrix ICA, MS Exchange, Oracle database traffic and more than 400 other industry-standard decodes. As part of the Sniffer family of network performance analysis products, the InfiniStream product leverages the investment made in other Network General™ products by offering a complete solution from proactive alerting, monitoring and analysis to report summarization and capacity planning.



InfiniStream Network Management statistics panel provides an efficient, easy to use way to select data for root cause identification.

Key Features and Benefits

Continuous Long-Term Capture

- Efficiently resolves intermittent problems
- Reduces the need for complex pre-capture filtering
- Supports full-duplex Gigabit Ethernet and 10/100 Ethernet line-rate capture
- Includes industry-leading 4TB storage

High Performance, Large Storage Capacity

- Captures all the data for a complete packet-level traffic history
- Flexible filtering to focus on problem timeframes, stations, and protocols

Network General Decodes and Expert Analysis

- Best-in-class decodes provide in-depth understanding of all major protocols
- Automatic identification and fast problem resolution with Expert analysis

Network General™, a privately-held company, is the leading developer and provider of award-winning solutions for network and application performance management. The Network General solutions portfolio consists of a family of integrated hardware and software products that enable the management of complex, high-speed networks covering virtually all wireless and wired network topologies and protocols, and the applications that traverse these networks



InfiniStream Network Management

Real Time and "Back in Time" Performance Analysis

Real-Time Alerting

InfiniStream software can issue alerts proactively to indicate that problems have arisen and may still be in process while the statistical information is being gathered. Alerts can be set on a broad range of performance metrics, from total link utilization all the way down to specific station, VLAN or protocol capture information. These alerts can be acted upon by any industry management product that is capable of accepting SNMP MIB trap information.

Quick Select Statistics

With performance information presented in a graphical view, the Quick Select feature provides a fast way to locate real-time or historical performance anomalies requiring resolution. Unlike RMON monitoring probes that rely on best effort for counters and information, InfiniStream software directly ties the accuracy of its statistics to the data that has been captured. Because it can capture all packets at full line rate, the integrity of statistics is easy to verify.

Analyzing relevant statistics is an essential part of the investigation process. Quick Select effectively narrows the view to the appropriate timeframe (down to one second intervals if needed), and presents only the applicable variables necessary to pinpoint and resolve the performance problem.

Reporting

InfiniStream reporting makes it easy to produce an executive summary of the problem and resolution, along with graphical support that highlights critical aspects of the project. More proactively, reporting can be used to show a baseline of how the network was performing before and after the deployment of a new application or service.

For sustained long term reporting, InfiniStream data can be integrated with the Network General Visualizer solution to provide longer term trend analysis and capacity planning information, enabling IT management to make more informed decisions on the purchase of new infrastructure equipment.

Advanced Protocol Decodes and Expert Analysis

Leveraging nearly two decades of experience in developing protocol decodes, InfiniStream software can decipher the latest application and routing protocols. Expert analysis provides in-depth knowledge of flows and the most complete detection of network anomalies. All major protocol decodes and Expert analysis families are included with the software, including new application decodes for VoIP, Citrix, Oracle and routing protocol updates such as BGPv4, IGMP and PIM. Sniffer Mobile decodes and support for 3G wireless are also available as an option.

World-Class Training, Consulting, and Support

Get the maximum value from your Network General products by attending Sniffer University, a comprehensive resource for building and enhancing skills in protocol analysis, application analysis and network troubleshooting. Sniffer University has trained nearly 100,000 network professionals worldwide.

More customized assistance is available through the Network General Consulting Services group, which assists clients during all network growth stages from planning, design, and product deployment, through ongoing management and emergency response.

Network General Customer Support Services group offers essential product knowledge and rapid, reliable technical support. Over 70 percent of our technical staff holds industry certifications and/or technical degrees and five-plus years of experience in the IT industry.

InfiniStream Appliance Specifications

i1620 Platform

Storage: 4TB

Standard appliance available in three models:

- 2 Gigabit SX Ethernet and 2 10/100/1000 Ethernet ports
- 8 10/100/1000 Ethernet ports
- 2 Gigabit Copper Ethernet and 2 10/100/1000 Ethernet ports

Enhanced performance appliance available in one model:

- 2 Gigabit SFP SX Ethernet and 2 10/100/1000 Ethernet ports

i420 Platform

Storage: 1TB

Standard appliance available in one model:

- 4 10/100/1000 Ethernet ports

Enhanced performance appliance available in one model:

- 2 Gigabit SFP SX Ethernet ports

Network General
178 E. Tasman Drive
San Jose, CA 95134
800.SNIFFER (800.764.3337)

www.networkgeneral.com

Network General and Sniffer are registered trademarks or trademarks of Network General Corporation and/or its affiliates in the US and/or other countries. All other registered and unregistered trademarks in this document are the sole property of their respective owners.
© 2005 Network General Corporation. All Rights Reserved.