

Security Administration Suite™

Reduces the cost and complexity of Active Directory administration

Overview

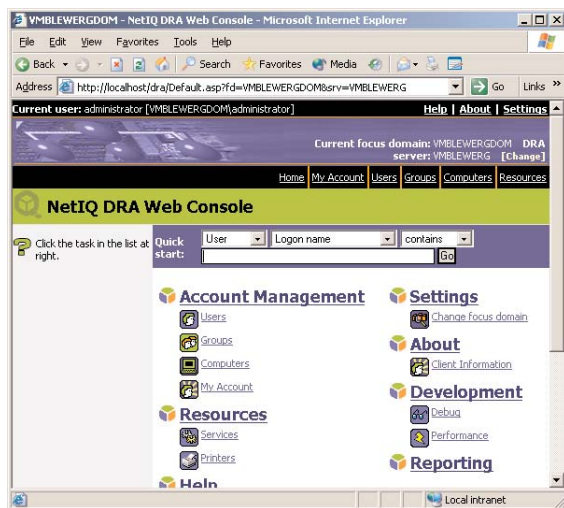
NetIQ's Security Administration Suite provides powerful enterprise-level privilege management for your Windows environments. With the suite's advanced delegation and policy-based administration you can dramatically decrease your workload and administrative costs while at the same time enhancing internal security.

The suite is comprised of Directory and Resource Administrator, Directory Security Administrator and NetIQ Group Policy Administrator.

Solutions for Today

While Active Directory provides a powerful infrastructure for your Windows environment, achieving secure administrative efficiency and cost effectiveness remains a constant challenge. Poor Group Policy management and weak administration of Active Directory's native permissions can pose significant security risks.

NetIQ's Security Administration Suite is the only solution on the market that can overcome these issues by delivering task-appropriate directory access, while at the same time reducing operational costs and enhancing your organization's security posture by leveraging NetIQ's unique Layered Security Architecture (LSA).



NetIQ's Directory and Resource Administrator provides an easy-to-use Web Console for administrators and help desk users.

Key Benefits

Reduces administration costs - Enables you to automate and delegate user and Group Policy management tasks. In addition wizard-driven task completion reduces the learning curve for users and minimizes the risk of errors.

Ensures enterprise account security - Secures your enterprise by reducing the number of privileged accounts and the risk of power escalation and identity theft. Security Administration Suite enables you to dramatically reduce the number of administrators who need privileges within Active Directory.

Increases administration efficiency - Simplifies administration by helping implement a management model that reflects how you think and work. With little or no training, IT administrators can transfer common user and mailbox management functions to the help desk or, with the tool's self-service functionality, to the end user. Help desk users can work more efficiently with the product's easy-to-use interface, which hides unnecessary complexity and automates manual tasks.

Maintains data integrity - Reduces data clutter by reliably enforcing business policies and controlling the data that can be put into your directories. If unchecked, data clutter in Active Directory can interfere with operational efficiency and increase the risk of dangerous errors.

Lowens total cost of ownership - Reduces error-related costs by providing an offline environment for Group Policy management. Administrators can simulate changes without affecting production and any changes can be controlled through automated change management approval and notification processes. This offline testing capability greatly minimizes the likelihood of making live environment mistakes—and provides for rollback capability in the event of a failure.

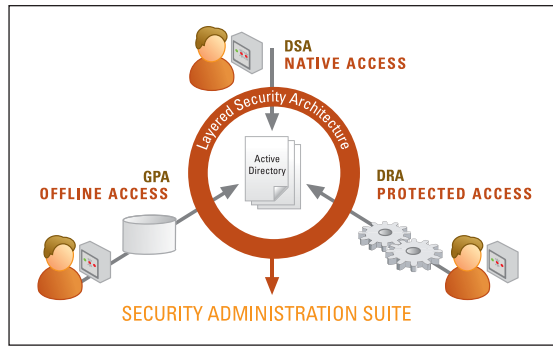
Enables task-appropriate directory access - Uses LSA to assign directory access options, based on needs and privilege level. The access options include native, so administrators can perform tasks within AD requiring elevated levels of privilege; protected, which gives help desk administrators access to perform tasks requiring low privilege but high automation; and offline, which allows policy administrators to perform tasks requiring testing and approval before promotion to a live environment.



ADMINISTER

Technical Features

- Rules-based delegation supports using wildcards and naming conventions to define views of your Active Directory.
- More than 60 roles and 300 powers can be used for delegation.
- Allows role definitions and application to be stored inside or outside Active Directory.
- Self-administration allows you to delegate the ability for users to update their own personal information, such as phone number and address.
- Dynamic ActiveView™ technology can span organizational units, domains, trees and forests, as well as Windows Server 2003, Windows 2000, Windows NT and Active Directory.
- Offline\Online Resultant Set of Policies (RsoP) analysis determines the set of effective policies that apply to a user when logged on to a specific machine, including "what-if" scenarios. Offline RSoP allows scenario simulation without having to roll-out changes to production environment first.
- Off-line Group Policy editing allows Group Policy Object (GPO) changes to be made off-line and then subjected to normal testing, approval and release processes.
- Group Policy rollback provides administrators with rollback capacity to allow a prior version of a GPO to be put back into production.
- Detailed auditing and reporting offers more than 85 built-in reports.
- Support for task automation procedures can be initiated before or after any action.
- Security Administration Suite includes scriptable LDAP-compatible ADSI provider.
- The suite supports several development languages, including C++, VB, VBScript and JScript.



NetIQ's unique Layered Security Architecture provides task appropriate directory access to enable native ACL management, centralized auditing of access, and offline Group Policy change management in a single solution.

System Requirements

Refer to the individual datasheets for Directory and Resource Administrator, Directory Security Administrator, NetIQ Group Policy Administrator and Secure Password Administrator for System Requirements at <http://www.netiq.com/solutions/finder.asp>

Contacts

Worldwide Headquarters

NetIQ Corporation
3553 North First Street • San Jose, CA 95134
713.548.1700
713.548.1771 fax
888.323.6768 sales
info@netiq.com
www.netiq.com

NetIQ EMEA
+44 (0) 1784 454500 • info@netiq.com

NetIQ Japan
+81 3 5909 5400 • info-japan@netiq.com
www.netiq.com/japan

NetIQ Australia & New Zealand
61 (0) 2 9959 2313
www.netiq.com/au

For our offices in Latin America and Asia,
please visit our web site at www.netiq.com/contacts